

POWER!

Driving power for everyone.

FOR ALL

DAIHATSU
DAIHATSU DIESEL MFG.CO.,LTD.

MISSION! FOR ALL

We've reached the point where environmental issues can only be solved if all of humanity works together.

Meanwhile, to support our modern way of life, we need electricity and engine power. We believe that it is our duty to provide stable energy throughout the world using the technology that we have accumulated for over 100 years and to build a future in which humankind can live in harmony with nature by making full use of advanced technologies.



CHALLENGE! FOR ALL

We try harder.

Using our strength in
development and engineering.

Keeping up with a big environmental shift.



We never stop trying to solve environmental issues, using our most advanced technology.

Diesel engines are the most energy-efficient of all internal-combustion engines. At Daihatsu, we are working to further improve the energy efficiency of our engines, to help preserve the global environment. Using our most advanced technology, we strive always to consider environmental issues from every angle; for example, by developing post-treatment systems for exhaust emissions, or by supporting a variety of clean fuels to replace fossil fuels.

Total energy solutions that reduce the environmental burden and enable safe operation.

As a total energy solution partner, Daihatsu finds the most appropriate engine system for each customer, using technology developed based on our extensive experience. We respond to our customers' requests by using creative and flexible thinking to design eco-friendly systems. We also develop and provide control devices and peripheral devices, which are useful for the safe operation and control of our engines.



SPIRIT! FOR ALL

A place of passion, pride,
and bold vision.

Our passion
transformed Moriyama into
the birthplace of our engines.

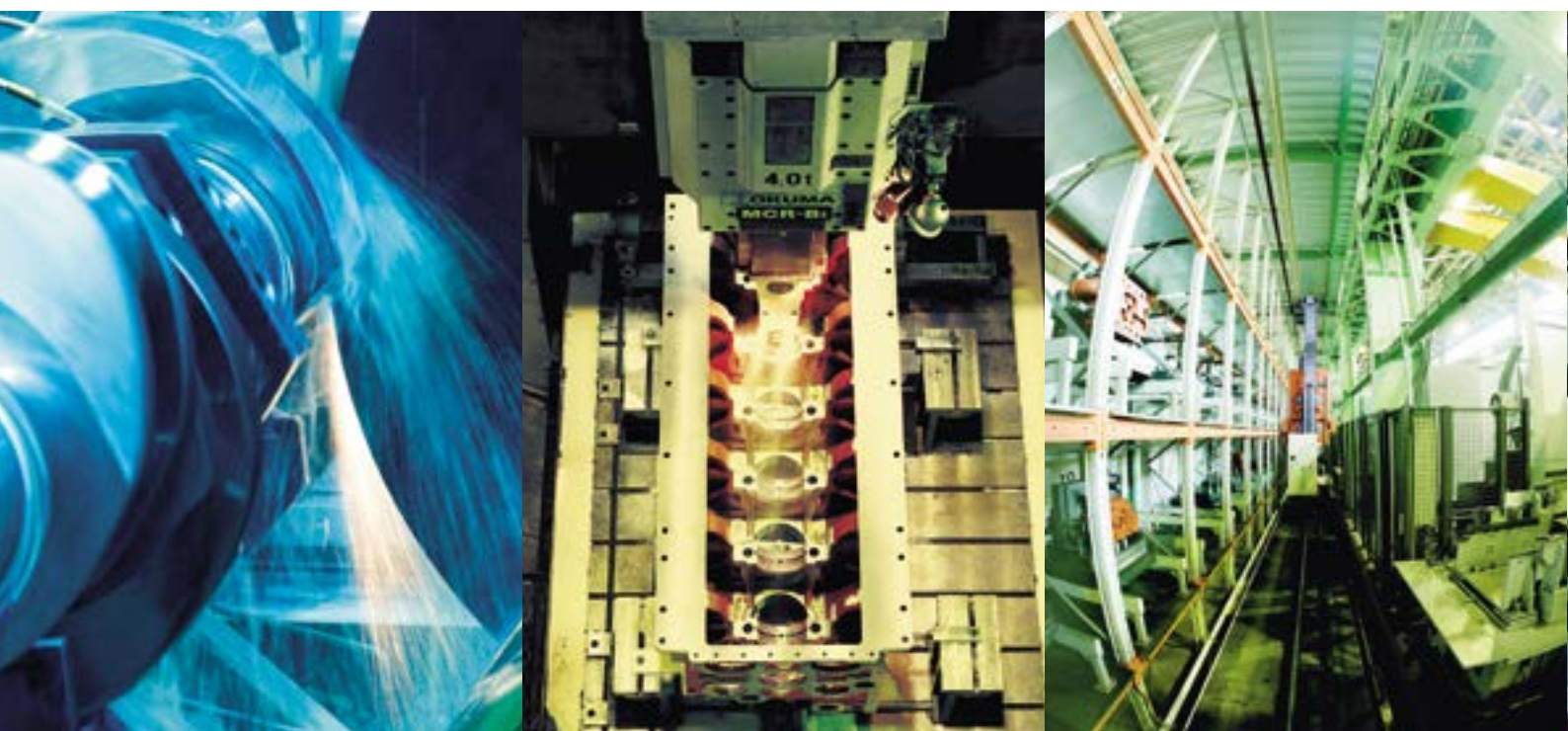


Quality assurance provides reassurance and reliability.

The evidence is the authorized factory certification we received from seven of the world's major registers of shipping.



The Moriyama factories have inherited our passion to achieve the highest quality assurance for our products. The idea here is to use real products under real conditions, while taking pride in maintaining our levels of quality. This is coupled with a pervasive sense of constant ongoing improvement in productivity and a willingness to tackle new problems in daily work. On top of this, we employ extremely advanced machinery to transform our passionate vision into an actual engine. Gathered together are a range of highly efficient production systems that provide the ultimate quality assurance. Our factories have been certified by seven of the world's top registers of shipping, and have also achieved ISO9001 certification. Daihatsu's quality-control systems have been highly evaluated worldwide and provide great reassurance and reliability.





**A manufacturer working on environmental issues.
The factories themselves are designed to
take account of the natural environment.**

A place that produces eco-friendly engines should not pollute the environment. This is our core belief. The Moriyama factories—which are both ISO14001 certified—are places where eco principles are put into practice. For example, the factories use power-generating gas engines, and total water-circulation systems. In this way, we are taking positive steps towards preserving the environment. They are eco-friendly factories that blend into their abundant natural surroundings beside Lake Biwa, the biggest lake in Japan.

PASSION! FOR ALL

Our desire to satisfy our customers has no limit.

24 hours a day, 365 days a year.

We hear every voice,
even those from the other side of the world.



**We want to access any engine,
wherever it's being operated. We're prepared for
accidents on a 24-hour, 365-day basis.**

Our Global Support Center offers an IT network that accepts online inquiries from anywhere in the world. It's linked to 23 countries, incorporates 40-plus bases, and features an extensive database of engine specifications and past records. We are able to provide support to customers 24 hours a day, 365 days a year. Furthermore, we offer reassurance and safety to customers all over the world by sending our expert engineers to any on-site location.

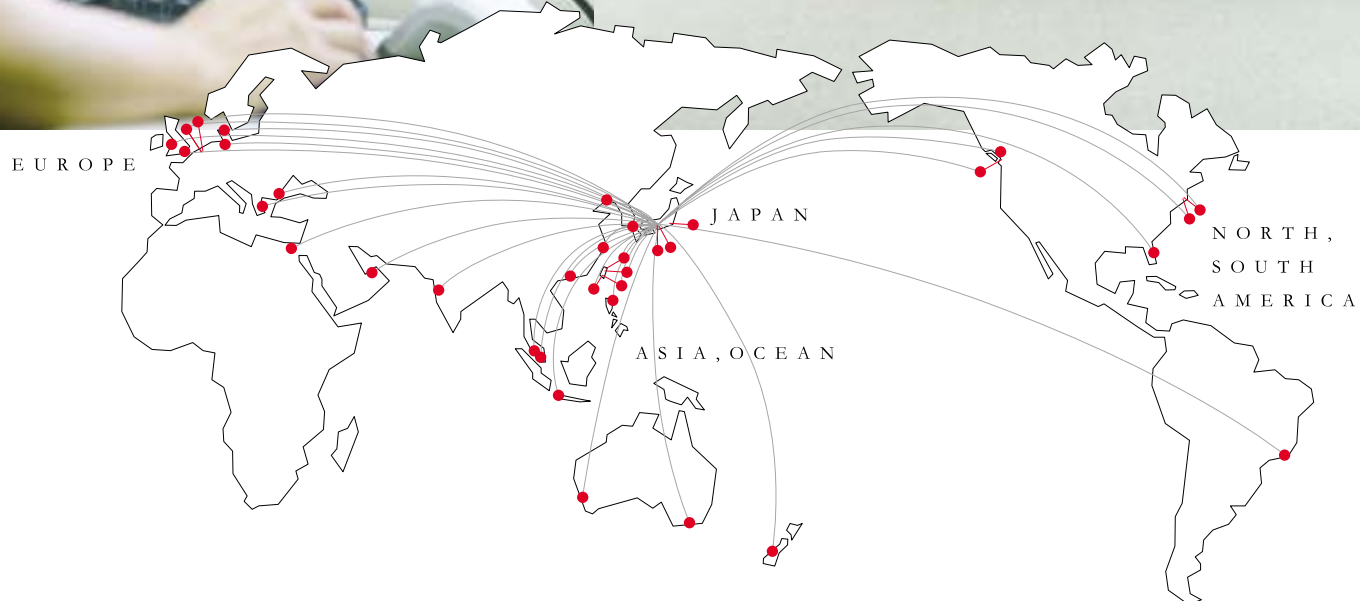


**Around 1.5 million parts available anytime.
Enables precise and speedy maintenance.**

The Moriyama Logistics Center is where required parts are dispatched to locations around the world. We keep in stock around 1.5 million parts for repairs and replacement, and these are dispatched with minimal delay. This helps our engineers to perform precise and speedy maintenance. As long as our engines are being operated, this hub of reassurance will continue to operate and act as a team member supporting our customers.

**Locating bases in the world's major cities and ports.
We aim to provide total global service.**

Daihatsu's Global Support Center is equipped with a system that enables engines operated worldwide to be monitored and diagnosed. In the event of a breakdown, we work together to provide rapid support for both technical and production-related issues. Our superior production abilities and highly developed technology enable us to react flexibly to urgent problems. Thanks to the strength of our network and staff, we offer a service network that covers the whole world.



DAIHATSU DIESEL ENGINE SERVICE NETWORK



CONFIDENCE! FOR ALL

Technology that goes beyond borders.

The seeds of power,
from Japan to the world.



**Delivering the power of DAIHATSU
where it's needed. Responding to the increasing
number of voices from around the world.**

To meet the increasing global demand for Daihatsu Diesel engines, we produce them in numerous locations outside Japan. No matter where they're produced, though, these engines reliably produce the same impressive levels of power. We conduct standardized education and training so that, as each factory expands, it can continue to provide the same level of production technology and quality assurance as the model Moriyama factories.



[Engine Assembly]

I make sure we follow the idea of using real products under real conditions, to deliver the highest possible quality of Daihatsu Diesel products to our customers. And I'm not afraid to make improvements. "Self-complete the process" is a motto that represents our assembly team's spirit.



[Product Trials]

Our mission is to dispatch only engines with the very highest levels of reliability. Particular attention is paid to the final operational tests, which represent the last hurdle before the engine can be released into the world. "Let's strictly follow the path we decided on," is the guiding principle for the whole team, as we strive to guarantee every engine's quality.



Our driving
comes
combined



[Marketing]

We want to build relationships with our customers so that we can talk about more than just work; we can also talk about everyday topics, such as their coworkers, workplace environments, and families.

[R&D]

We repeatedly test our high-tech engines by installing them in real-life implementations that replicate a variety of usage conditions. Our extensive experience allows us to confidently ascertain the safety and reliability of the engines that we produce.



[After Service]

Our services will be available as long as Daihatsu Diesel engines are being used. We constantly consider any problems that might arise for our customers, and seek to provide the highest levels of reassurance. Our aim is to pay close attention to our customers needs at all times, and provide the support that their ships require to navigate the seas safely.

[Daihatsu Diesel Europe](DDE)

Information from ships all over the world is gathered together in London. We want to prepare support systems that our customers can rely on totally, so that they may say, "If you contact DDE, you'll get the best information on service and technology." What's more, we want to give our customers satisfaction that exceeds their expectations.



[Human Resources]

In the Human Resources Division, we provide full support for our employees in order to improve their levels of professionalism. Our employees take responsibility for their results, and conduct their work with a high degree of skill and awareness, based on Daihatsu's principle of "CAN". CAN stands for the "C" of "Challenge", the "A" of "Action", and the "N" of "Nice-Sense".

power
from the
efforts
of many.

[Design Development]

As we incorporate advanced technology in developing new engines, we face an ongoing series of challenges in order to strike a balance between energy efficiency and environmental protection. At Daihatsu, we pride ourselves on being a developer that goes beyond the status quo, works on new problems, and enhances its technology.



[Engineering]

Our goal is for our engines to provide eco-friendly power solutions when they are incorporated into our customers' systems. In addition to providing suggestions based on our experience with engine peripheral technology, we are trying to incorporate ever-more advanced technology.

[Daihatsu Diesel Shanghai]

The pace of change is so fast in China that a customer or licensee's needs can change from one day to the next. We serve as Daihatsu Diesel's after-service representative, providing information so that our customers can enjoy stress-free success in the huge market that is China.



MARINE ENGINES



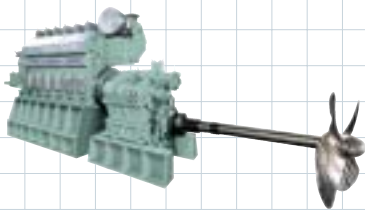
8DK-28 Auxiliary Engine



Large Container Vessel



Car Carrier Ship



Marine Main Engine



Marine Auxiliary Engine



6DK-20 Auxiliary Engine



6DCM-32F Main Engine



Ferry



Electric Propulsion Ship

Advanced marine engines that achieve outstanding real-world results

From large merchant ships and tankers to cargo ships, marine transportation has long been the backbone of commodity distribution. Today, marine transportation is gaining increasing recognition as an eco-friendly method of transport. Throughout the history of marine transport, marine engines have been developed and used extensively in seas all over the world. This is the face of Daihatsu Diesel. We have always offered high-performance engines that incorporate advanced technology. Daihatsu's long history in the industry has yielded outstanding results and a reputation for reliability. Along with our extremely durable engines, which are based on tried-and-tested technology, we have developed new technologies to reduce CO₂ and NO_x emissions. As we develop our products, we continue to pay particular attention to the global environment.

STATIONARY ENGINES



Kansai International Airport

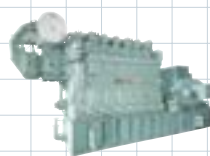


Taima Drainage Pumping Station, Osaka Prefecture



Stationary engines operate side-by-side with people and nature

In modern life, we rely heavily on electricity. It is now more important than ever to ensure a regular power source or an emergency backup power source. Daihatsu Diesel contributes to society with reliable products and services. For example, we offer power sources that work to drive riverside water pumps, which in turn support local lives and prosperity. We aim to protect the environment while providing reliable and low-maintenance equipment that is simple to use.



Gas Engine



Diesel Engine

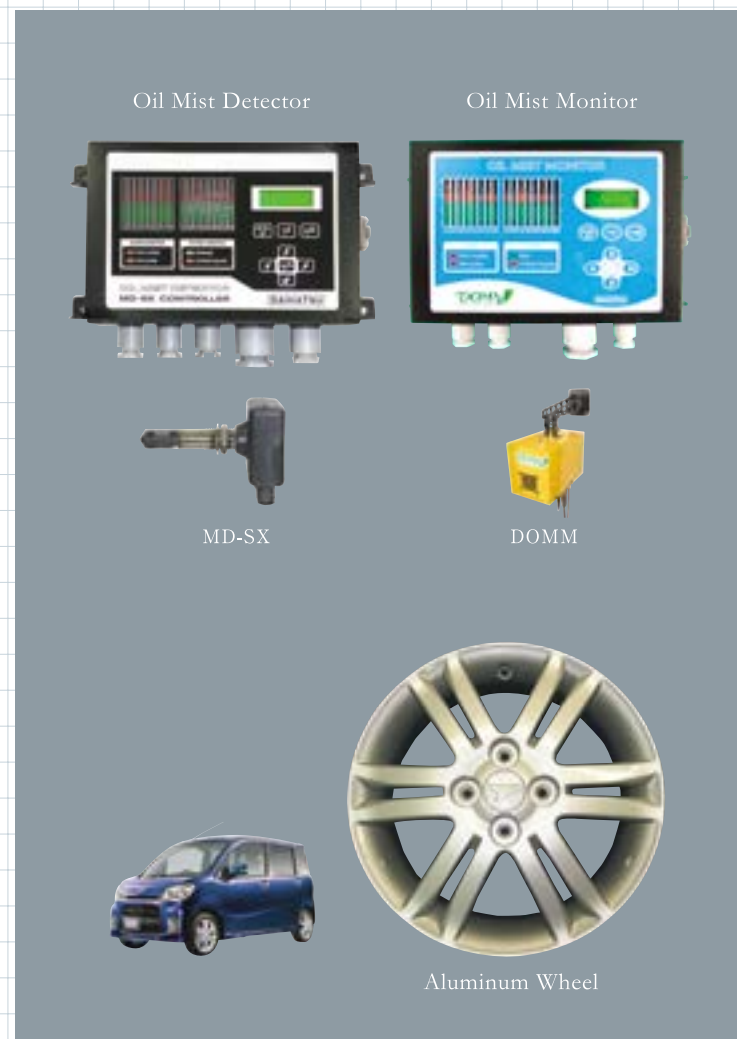


Gas Turbine

OTHER PRODUCTS



Moriyama Factory Gas Engine



A wide range of products that perform superbly all over the world

Our Oil Mist Detector—the only one made in Japan—has been installed in numerous ships since it was first sold in 1976. This device has, over time, incorporated Daihatsu Diesel's most advanced technology. It continues to enhance the safety of diesel engines by providing a warning to prevent serious accidents, such as a malfunction of the shaft-bearing heating system. A further development is our new Oil Mist Monitor, which detects problems with oil mist concentration inside the ship, to prevent on-board fires. Other Daihatsu Diesel products perform with distinction in a variety of locations; for example, our aluminum wheels for automobiles.

Group and Affiliated Companies

Daihatsu Marketing Businesses	
(JAPAN)	DAIHATSU DIESEL NISHINIHON CO., LTD. 3-1, Tanotsu 2-chome, Higashi-ku, Fukuoka, 813-0034 Japan Phone: 81-92-622-0085 Fax: 81-92-626-1240
	DAIHATSU DIESEL SHIKOKU CO., LTD. 6-42, Oumi-cho 3-chome, Imabari, Ehime, 794-0007 Japan Phone: 81-898-23-6724 Fax: 81-898-31-5756
	DAIHATSU DIESEL NAKANIHON CO., LTD. 1-21, Higashisakura-cho, Fukuyama-city, Hiroshima, 720-0065 Japan Phone: 81-84-920-8006 Fax: 81-84-920-8020
	DAIHATSU DIESEL EAST JAPAN CO., LTD. 1-13, Higashiueno 2-chome, Daito-ku, Tokyo, 110-0015 Japan Phone: 81-3-5828-3501 Fax: 81-3-5828-3520
(OVERSEAS)	DAIHATSU DIESEL (EUROPE) LTD. 28th Floor, One Canada Square, Canary Wharf, London E14 5AA, United Kingdom Phone: 44-20-3871-5000 Fax: 44-20-7512-9291
	DAIHATSU DIESEL (ASIA PACIFIC) PTE.LTD. 16 Collyer Quay, Income at Raffles #29-02, Singapore 049318 Phone: 65-6589-9510 Fax: 65-6536-4964
	DAIHATSU DIESEL (AMERICA).INC. 380 N Broadway, Suite 302, Jericho, N.Y. 11753 U.S.A. Phone: 1-516-822-3483~4 Fax: 1-516-822-3485
	DAIHATSU DIESEL (SHANGHAI) CO.,LTD. Room A-B, Floor 14, Huamin-Empire-Plaza, No.728 Yanan RD(w), Shanghai, 200050, China Phone: 86-21-6225-7876~7 Fax: 86-21-6225-9299
DAIHATSU DIESEL PHILIPPINES CORPORATION Warehouse 2 Dowjones Compound, KM 19 West Service Road, Sucat Paranaque, Philippines 1700 Phone: 63-2-8362-4461 Fax: 63-2-8817-1285	
Daihatsu Manufacturing Businesses	
(JAPAN)	DAIHATSU DIESEL HIMEJI MFG.CO., LTD. Headquarters: 12-8, Fuji-cho, Hirohata-ku, Himeji-city, Hyogo, 671-1123 Japan Phone: 81-79-240-9370 Fax: 81-79-240-9371 Major Business: Manufacture of large engine
	NIPPON NOZZLE SEIKI CO., LTD. Headquarters: 17-1, Sakurada 5-Chome, Kuki City, Saitama, 340-0203, Japan Phone: 81-480-58-7554 Fax: 81-480-58-7609 Major Business: Manufacture of engine parts
(OVERSEAS)	DAIHATSU DIESEL ANQING IRONWORKS CO., LTD. Headquarters: Jing 5 Road, Anqing Economic & Technology Development Zone, 3.9 km 2 Industrial Park, Anqing China Phone: 86-556-5305298 Fax: 86-556-5305587 Major Business: Manufacture of engine parts
Daihatsu Distribution Businesses	
DAIHATSU DIESEL PARTS SERVICE CO., LTD. Headquarters: 808-2 Furutaka-cho Aza-Matsuzuka, Moriyama City, Shiga, 524-0044 Japan Phone: TEL:077-583-8001 Fax: 077-583-6835	
DS CORPORATION Headquarters: 1-30 Oyodonaka 1-chome, Kita-ku, Osaka, 531-0076, Japan Phone: 81-6-6454-2777 Fax: 81-6-6454-2775	
DDK LOGISTICS CO., LTD. Headquarters: 1-30, Oyodonaka 1-Chome, Kita-ku, Osaka 531-0076, Japan Phone: 81-6-6454-9722 Fax: 81-6-6454-9727	
Other Businesses	
DAITEK INC. Headquarters: 1-30 Oyodonaka 1-chome, Kita-ku, Osaka, 531-0076, Japan Phone: 81-6-6454-2650 Fax: 81-6-6454-2720 Major Business: Information handling	
DAIHATSU DIESEL UMEDA CITY Headquarters: 1-30 Oyodonaka 1-chome, Kita-ku, Osaka, 531-0076, Japan Phone: 81-6-6454-2331 Fax: 81-6-6454-2750 Major Business: Real-estate rental	
DD TECHNICAL CO., LTD. Headquarters: 45 Amura-cho, Moriyama City, Shiga, 524-0035 Japan Phone: 81-77-583-5474 Fax: 81-77-583-5497 Major Business: Planning	
MD ENGINEERING CO., LTD. Headquarters: 1-30 Oyodonaka 1-chome, Kita-ku, Osaka, 531-0076, Japan Phone: 81-6-6454-2325 Fax: 81-6-6454-2680 Major Business: After-service for gas engines	

Company History

1907	March	Hatsudoki Manufacturing Co., Ltd (Hatsudoki = engine) was founded in Osaka, Japan for the purpose of making internal-combustion engines.
1951	December	Company name changed to “Daihatsu Motor Co., Ltd”.
1966	May	The Osaka business division of Daihatsu Motor Co., Ltd. was separated and Daihatsu Diesel Mfg. Co., Ltd. was newly founded.
1969	August	Construction of Moriyama factory in Shiga prefecture.
1977	November	Listed on second section of Osaka Securities Exchange.
1979	January	Construction of second Moriyama factory in Shiga prefecture.
1982	January	Licensing affiliation with China Shipbuilding Trading Co., Ltd.
1993	January	Started manufacture and distribution of high-output diesel engines (DK-20, 28 series)
	March	Completion of Umeda Sky Building by co-development at site of old headquarters.
1994	January	Acquired ISO9001 accreditation.
1997	March	Started manufacture and distribution of company’s maximum output engine (12DK-36).
1998	August	Development of Vertical Gas Turbine for Pump Stations.
2000	December	Moriyama factory acquired ISO14001 accreditation.
2001	April	Started manufacture and distribution of high-output diesel engine (DC-17).
	October	Construction of Technological Development Center and “Discoverium” history museum at first Moriyama factory.
2004	April	Started manufacture and distribution of next-generation fuel-efficient diesel engine (DC-32).
	June	Concluded technical collaboration on gas engine with Mitsui Engineering & Shipbuilding Co., Ltd.
2005	July	Head Office transferred from Chuo-ku to Kita-ku.
2006	August	Achieved cumulative diesel engine production output of 30 million horsepower.
2008	May	Construction of Research and Development center at second Moriyama factory.
2010	July	Licensing affiliation with Doosan Engine Co., Ltd. (Korea).
	September	Founded MD Engineering Co., Ltd. for gas engine maintenance in a joint venture with Mitsui Engineering & Shipbuilding Co., Ltd.
	November	Started distribution of DE-18 and DE-23 eco-responsive diesel engines.
2011	July	Licensing affiliation with Kilrosker Oil Engines Limited (India).
2012	July	Licensing affiliation with Alfa Diesel (Brazil).
2013	March	Maritime SCR (Selective Catalytic Reduction) designs complete.
	September	Company archives (c. 1907 – 1911) of Japan’s first gas intake engine registered to the National Museum of Nature and Science.
	October	Acquisition of an IMO NOx Tier 3 SOC certificate – a world first.
2014	November	IMO NOx Tier 3 certification for the 6DE28DF marine dual-fuel engine.
2015	January	Achieved cumulative DE-18 engine sales total of 1000 engines.
	July	Nippon Nozzle Seiki Co., Ltd. becomes a subsidiary; its stocks are acquired.
	November	Land procured for new plants in Himeji City, Hyogo Prefecture.

DAIHATSU DIESEL "DISCOVERIUM" HISTORY MUSEUM

In 2001, this museum was built at the same site as the first Moriyama factory. Daihatsu gathered for display a range of historical materials, products, and time-lines. One highlight is a suction gas engine, which is registered at the Center for the History of Japanese Industrial Technology in the National Museum of Nature and Science. This is a history museum that conveys the history and spirit of Daihatsu Diesel.



Casting our eyes over the vast ocean in front of us,
we reaffirm our commitment to using our advanced
manufacturing technology to help protect the earth's
environment.

We vow to cultivate our creative powers of development
to respond to the ever-diversifying needs of society.
We aim to keep passing on the technology we have
developed up to now.

To do this, we must respond to the voices of a new
generation and bring together the knowledge and
skill of every single employee.

Superior engine production and a smart
global business strategy—changing ourselves,
changing the world.

We offer driving power for everyone.
The trail behind our ship goes back over a
century, and runs long into the future.

Corporate Philosophy

We cultivate a creative touch and superior technology,
and offer value to enrich our society and
increase harmony among different groups of people.
Daihatsu is always moving forward.

DAIHATSU **DAIHATSU DIESEL MFG.CO.,LTD.** <http://www.dhtd.co.jp>

Head Office	1-30 Oyodonaka 1-chome, Kita-ku, Osaka, 531-0076 Japan	Phone: 81-6-6454-2331 Fax: 81-6-6454-2750
Tokyo Office	4th Floor, DAIHATSU Building, 2-10, Nihonbashi-honcho 2-chome, Chuo-ku, Tokyo, 103-0023 Japan	Phone: 81-3-3279-0827 Fax: 81-3-3245-0395
Sendai Branch	2-3 Honmachi 2-chome, Aoba-ku, Sendai, Miyagi, 980-0014 Japan	Phone: 81-22-227-1674 Fax: 81-22-265-6514
Nagoya Branch	47-1, Nagono 1-Chome, Nakamura-ku, Nagoya, 450-0001, Japan	Phone: 81-52-561-1311 Fax: 81-52-561-1315
Shikoku Branch	6-42 Oumi-cho 3-chome, Imabari, Ehime, 749-0007 Japan	Phone: 81-898-32-6213 Fax: 81-898-31-5756
Kyushu Branch	3-1 Tanotsu 2-chome, Higashi-ku, Fukuoka, 813-0034 Japan	Phone: 81-92-629-0731 Fax: 81-92-622-3210
Moriyama First Factory	45 Amura-cho, Moriyama City, Shiga, 524-0035 Japan	Phone: 81-77-583-2551 Fax: 81-77-582-5714
Moriyama Second Factory	808-2 Furutaka-cho Aza-Matsuzuka, Moriyama City, Shiga, 524-0044 Japan	Phone: 81-77-583-2555 Fax: 81-77-583-6417
Himeji Factory	12-8, Fuji-cho, Hirohata-ku, Himeji-city, Hyogo, 671-1123 Japan	Phone: 81-79-240-9370 Fax: 81-79-240-9371
Shanghai Office	Room A-B, Floor 14, Huamin-Empire-Plaza, No.728, Yanan RD(w), Shanghai, 200050, China	Phone: 86-21-6225-7876~7 Fax: 86-21-6225-9299
Jakarta Office	Mangalia Wanabakti Bldg., 3rd Floor, Blokiv-a, No.304 Jl. gatot Subroto, Senayan Jakarta Pusat, 10270, Indonesia	Phone: 62-21-5700304 Fax: 62-21-5733044