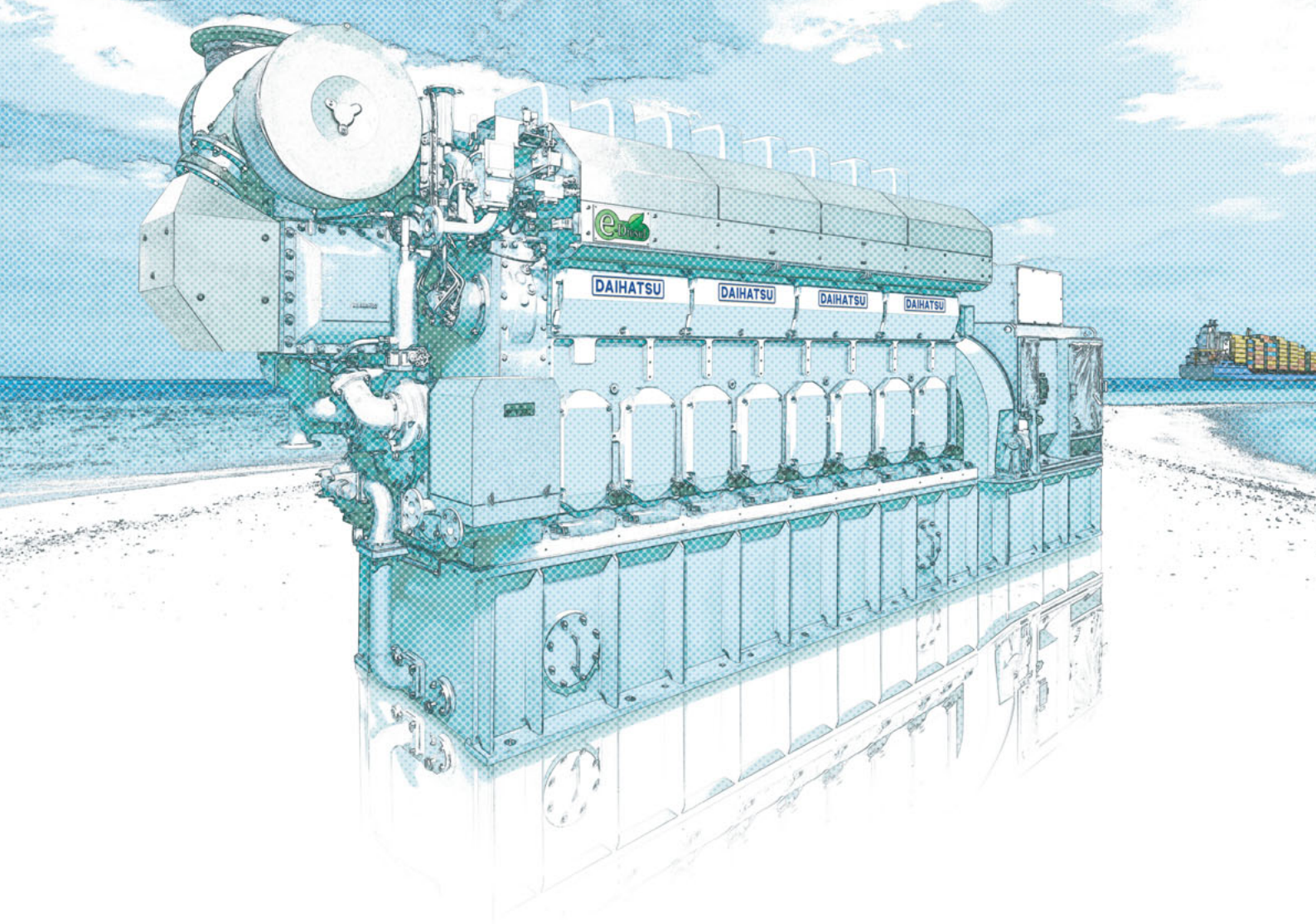


DAIHATSU

High-Efficiency Diesel Engine

DEL-23



DAIHATSU DIESEL MFG.CO.,LTD.

DEL-23

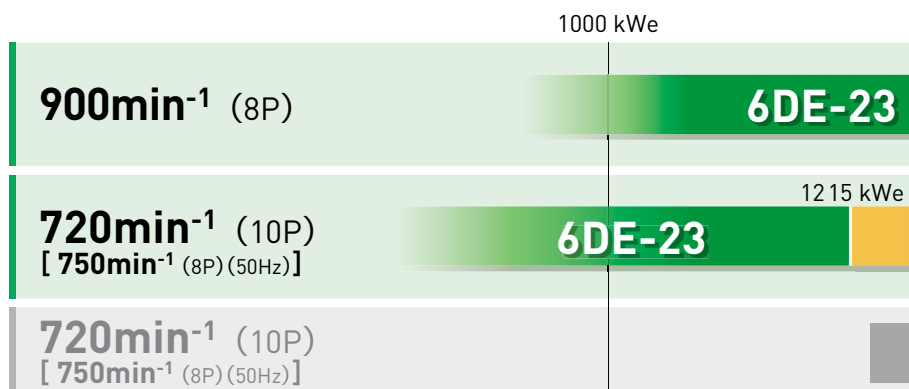
A long-stroke version of the eco saving space with greater power a

With the installation of environmental devices and the increase in onboard power consumption has been rising in recent years. In response to this trend, we have incorporated a long-stroke version for marine use, an engine which has already received wide acceptance. The superb environmental performance remains the same, while achieving space-saving and greatly increased output.

■ Features

1. The long-stroke design has enabled downsizing
2. The 8-cylinder, 900 rpm engine covers the Daihatsu D
3. The height is reduced by approximately 20%,
(Compared to the Daihatsu D
4. Combination with an SCR system provides NO

■ Output Ranges



[60 Hz] Output ranges vary depending on the engine.

■ Technical Data

Main Specifications

Engine Type		8DEL-23		
No. of cylinders		8		
Engine speed	min ⁻¹	720	750	900
Rated output	kWm	1750		2200
Generator output*1	kWe	1650		2080
Bore	mm	230		
Stroke	mm	350		
Piston speed	m/s	8.4	8.8	10.5
Brake mean effective pressure	MPa	2.51	2.41	2.52
Length	mm	7390		
Width	mm	1970		
Height	mm	2860		
Dry weight	kg	30000		

*1 Generator efficiency calculated at 94.5%.

*2 The dry weight and external dimensions vary depending on the generator specifications and accessories.

Dimen



-friendly DE-23 debuts, and low fuel consumption.

ase in electronic equipment,

design in our DE-23 diesel engine
claim since the first deliveries in 2011.

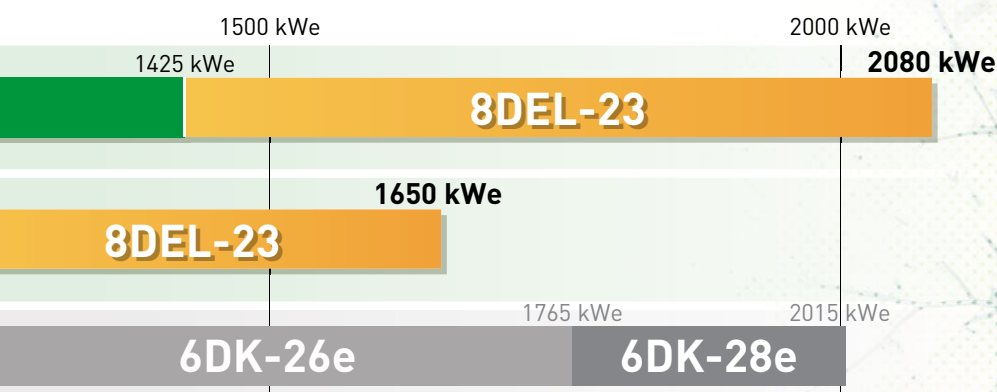
ng, high output, and low fuel consumption.

atsu Diesel output range of 6DK-26e/6DK-28e.

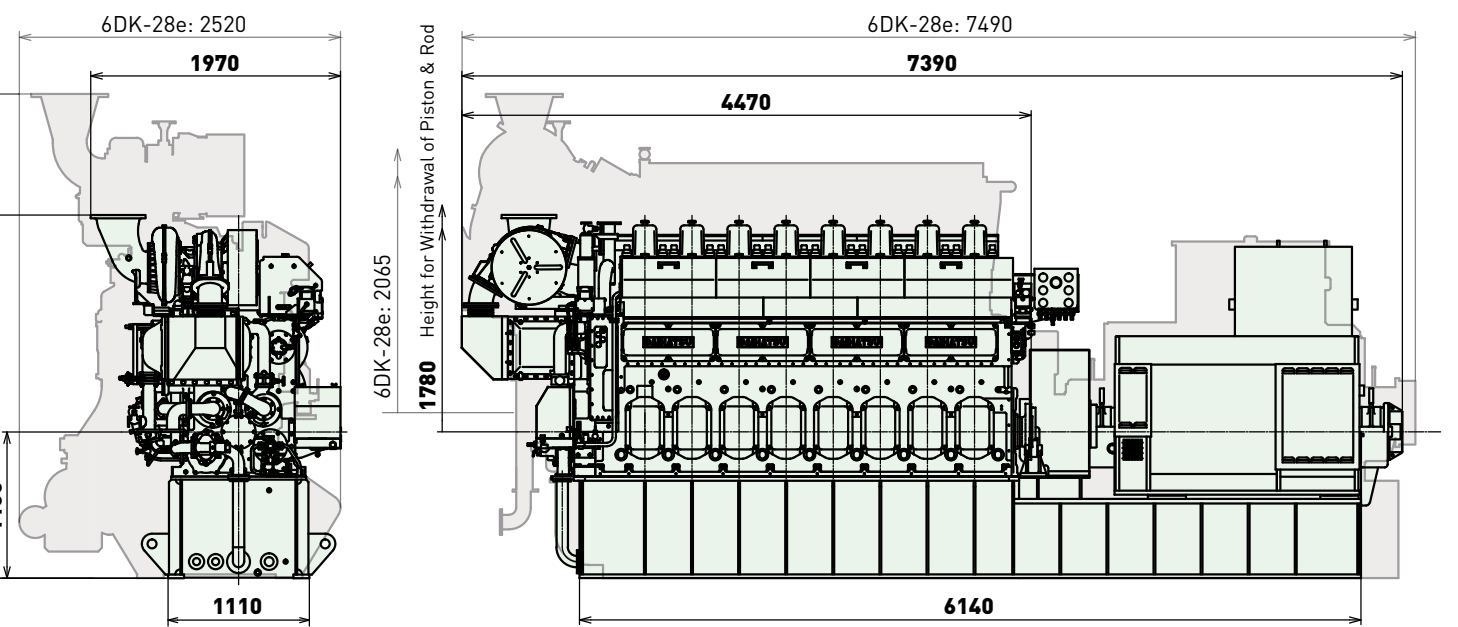
for greater maintenance space.

(iesel 6DK-28e)

x Tier III compliance.



Dimensional Drawings (Compared with the 6DK-28e)





DAIHATSU **DAIHATSU DIESEL MFG.CO.,LTD.**

Head Office

1-30, Oyodo Naka1-chome, Kita-ku, Osaka, 531-0076 Japan
TEL: +81-6-6454-2393 FAX: +81-6-6454-2682

Tokyo Office

2-10, Nihonbashi-Honcho 2-chome, Chuo-ku, Tokyo, 103-0023 Japan
TEL: +81-3-3279-0827 FAX: +81-3-3245-0395

Moriyama Division

45 Amura-cho, Moriyama-city, Shiga, 524-0035 Japan
TEL: +81-77-583-2551 FAX: +81-77-582-5714

Taiwan Office

c/o Marine Technical Industries Co., Ltd.
No.14 Tai-Tang RD. Lin-Hai Industrial Zone, Kaohsiung, 812 Taiwan
TEL: +886-7-803-1082 FAX: +886-7-801-9179

Daihatsu Diesel (EUROPE) Ltd.

28th Floor, One Canada Square, Canary Wharf, London E14 5AA, United Kingdom
TEL: +44-20-3871-5000 FAX: +44-20-7512-9291

Daihatsu Diesel (AMERICA), Inc.

380 N Broadway, Suite 302, Jericho, N.Y. 11753 U.S.A.
TEL: +1-516-822-3483/4 FAX: +1-516-822-3485

Daihatsu Diesel (ASIA PACIFIC) Pte.Ltd.

16 Collyer Quay, Income at Raffles #29-02, Singapore 049318
TEL: +65-6589-9510 FAX: +65-6536-4964

Daihatsu Diesel (SHANGHAI) Co.,Ltd.

Room A-B, Floor 14, Huamin Empire Plaza, No.728, Yanan Rd.(W.), Shanghai, 200050, China
TEL: +86-21-6225-7876/7 FAX: +86-21-6225-9299

●Please refer to our separate brochure for the "DAIHATSU AFTER-SERVICE NETWORK".

●All information contained in this pamphlet is correct at the time of printing, but is subject to change without notice.